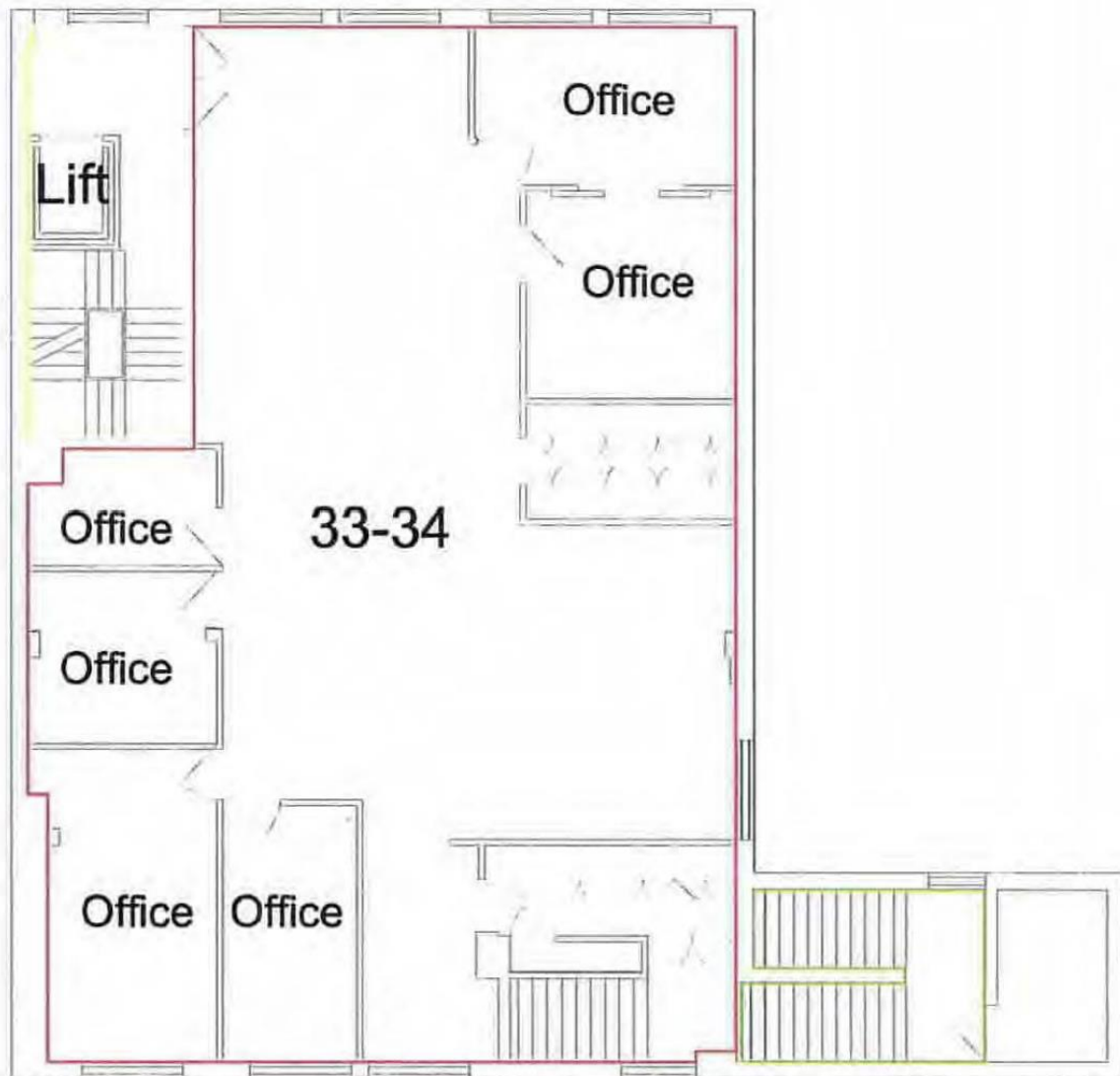


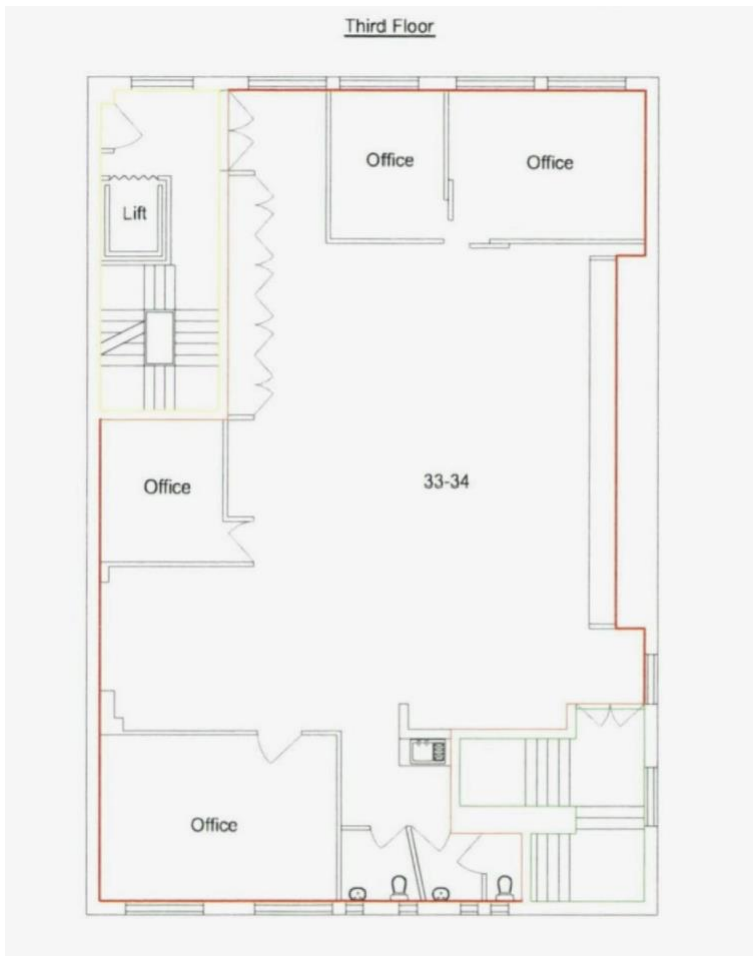
First Floor



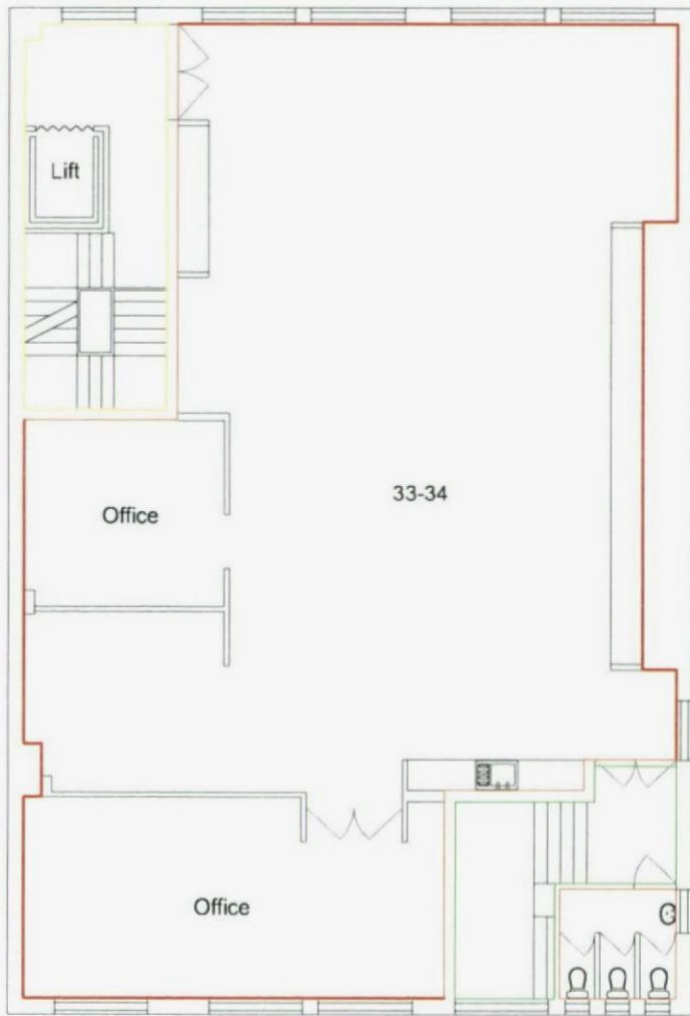
Second floor



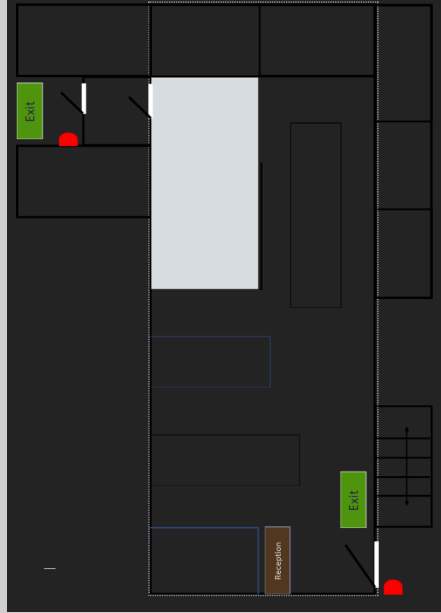
Third Floor



Fourth Floor



FLOOR 1: CURRENT



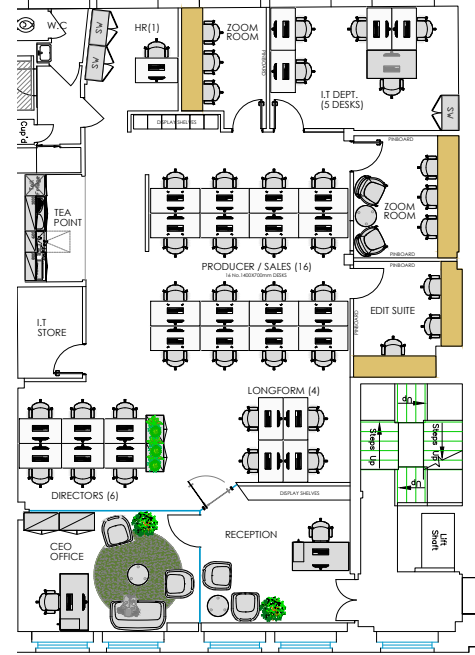
TOTAL: 24 Desks
Clusters: (Broken down)
 Not clear from measurements
 Qty of 1400 bays

Desk Cluster (8 Desks) 2
 Desk Cluster (6 Desks) 1

Single desks:
 X2 1400mm

- X3.5 side rooms
- X1.5 edits
- X1 private office

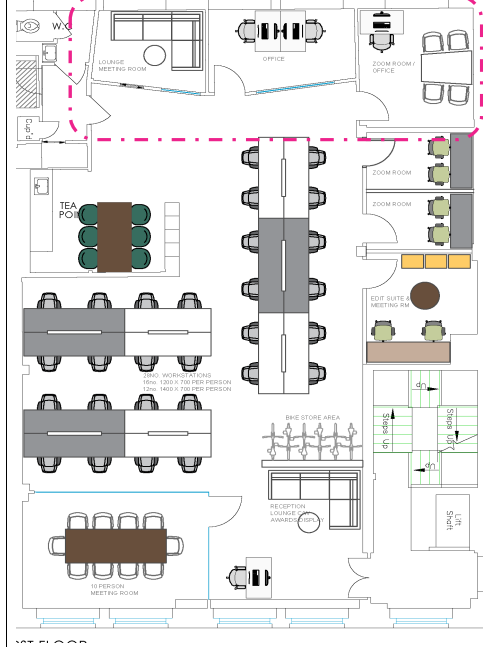
HESTIA V1



TOTAL: 26 Desks
 X16 1400mm Desks
 X10 1200mm Desks

- **IT moves to floor 1.**
- X1 Dedicated edit.
- X 2 Zoom rooms**
- X2 private offices

UMFREVILLE V1

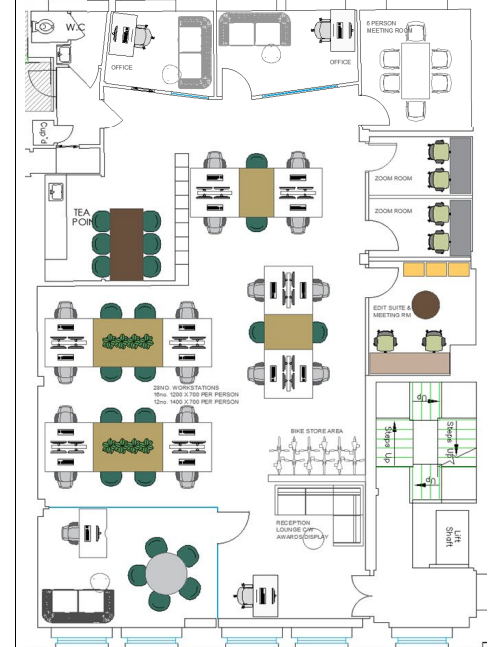


TOTAL: 28 Desks
 X12 1400mm Desks
 X16 1200mm Desks

Option:
 X16 1400mm
 X12 1200mm

- +2 zoom rooms**
- Bike rack
- +1 Dedicated Edit/ Playout room
- **Remaining rooms (4)** stay in situ. Upgraded to facilitate preferred configurations.

UMFREVILLE V2



RST FLOOR

Total: 28 Desks
 X16 1400mm desks
 X12 1000mm desks

- 1200's can be swapped in

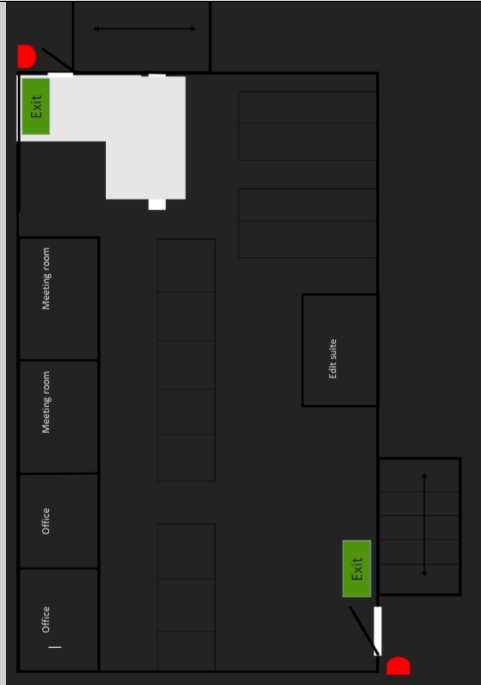
Option:
 X16 1400mm
 X8 1200mm
 X4 1000

- **Option 1:**
 X3 Private offices
 x1 6-person meeting room
- **Option 2:**
 X1 large MR
 X1 soft 3-person MR
 X1 2-person office room
 X1 1 private office room

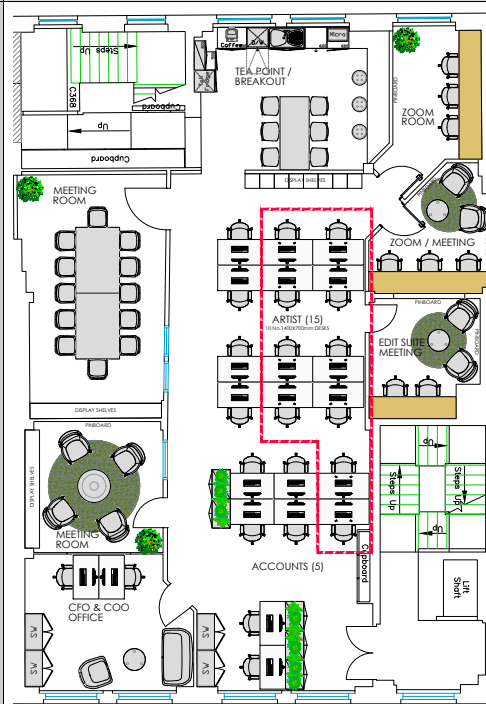
**All zoom rooms could double into hybrid edits. Smaller than main suites. (dependent on network surveys/)

- Preferred planner will be provided with measurements and pictures of current furniture to assess what could be reused.
- Kitchenettes will still feature on all levels.

FLOOR 2: CURRENT



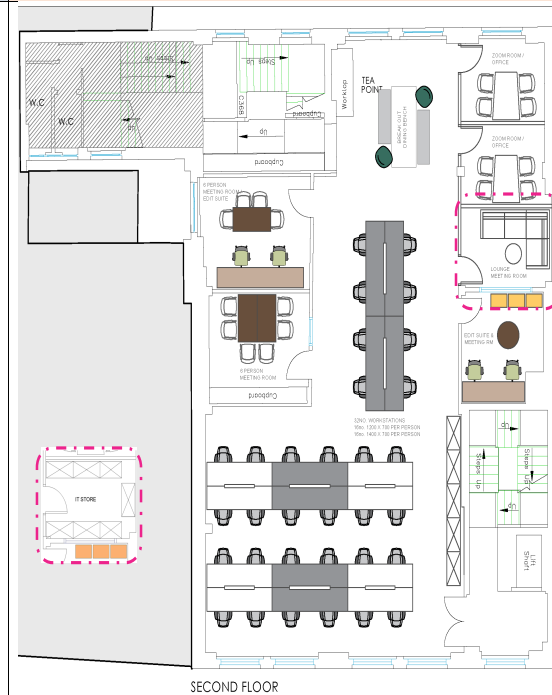
HESTIA V1



SECOND FLOOR

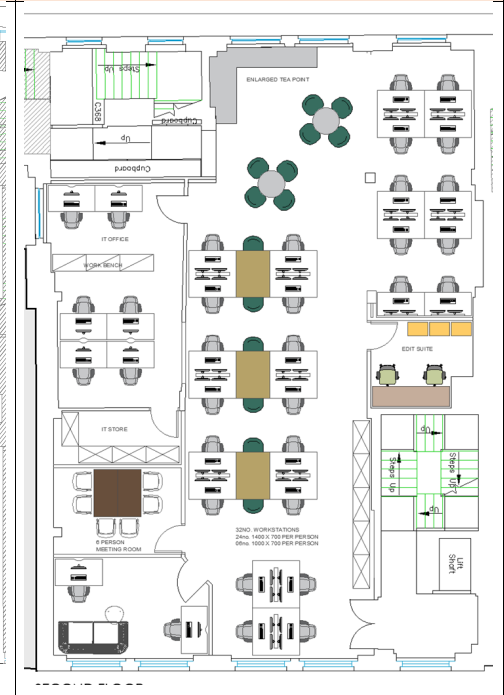
TOTAL: 20 Desks	<ul style="list-style-type: none"> X3.5 side rooms X1.5 edits X1 private office
X10 1400mm Desks X10 1200mm Desks	<ul style="list-style-type: none"> X1 Dedicated edit. X 2 Zoom rooms** X1 2person-private office X1 12-person lrg MR X1 Med MR

UMFREVILLE V1



TOTAL: 32 Desks	<ul style="list-style-type: none"> X2 medium meeting rooms +1 Dedicated Edit/ Playout room Remaining rooms (3). Upgraded to facilitate preferred configurations. <ul style="list-style-type: none"> Converted into IT office + store. +1 private office X2 private office + meeting room (Swapping spaces to Floor 1)
X16 1400mm Desks X16 1200mm Desks	

UMFREVILLE V2



Total: 32 Desks	<ul style="list-style-type: none"> IT moves to floor 2. X1 2-person Private offices x1 6-person meeting room 1 Dedicated Edit/ Playout room
X22 1400mm desks X6 1000mm desks X4 1200	

**All zoom rooms could double into hybrid edits. Smaller than main suites. (dependent on network + surveys)

- Preferred planner will be provided with measurements and pictures of current furniture to assess what could be reused.
- Kitchenettes will still feature on all levels.