





Net Internal Area Plan

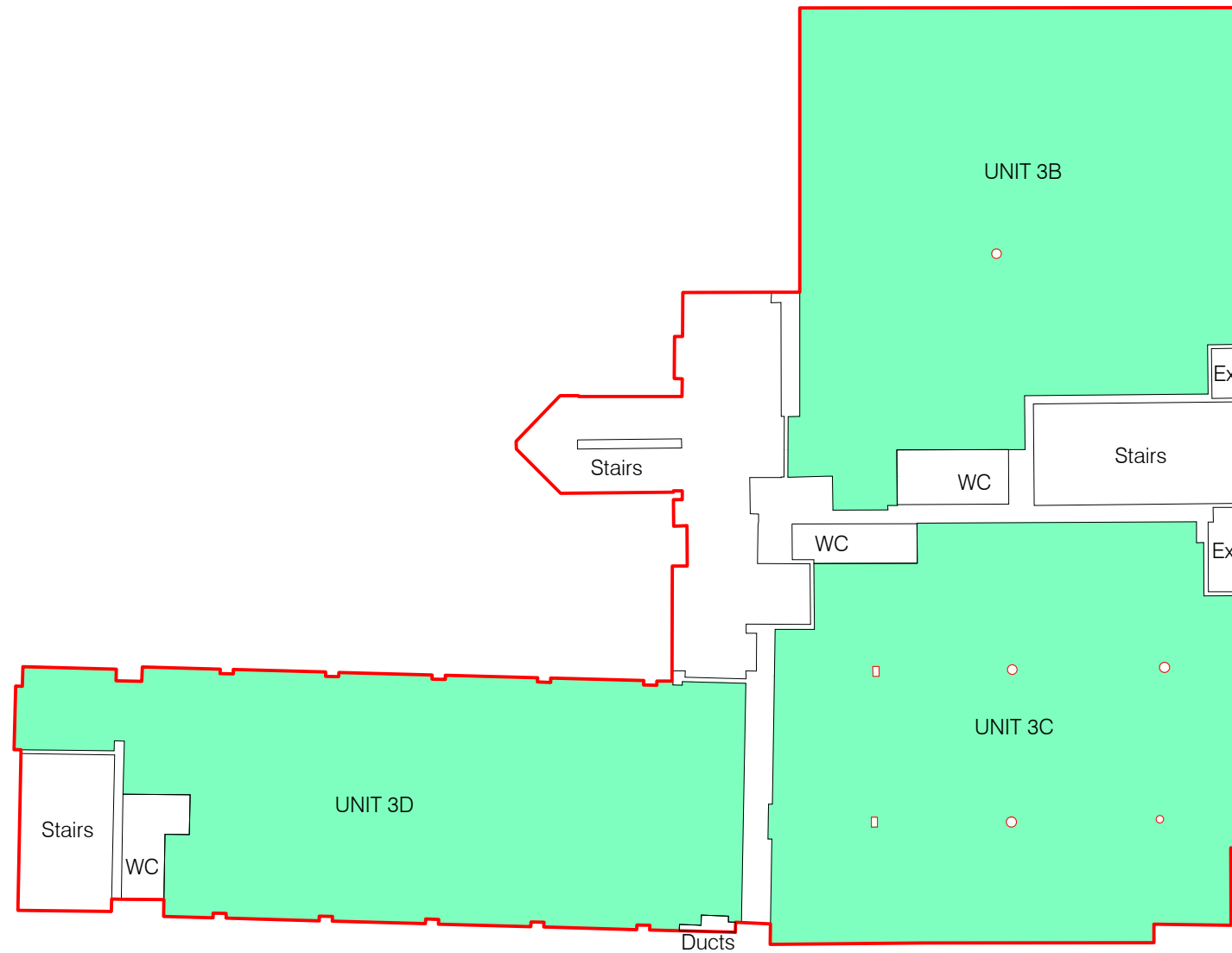
	GIA	435.1 sq m	4683 sq ft
	OFFICE Unit 3B	122.3 sq m	1316 sq ft
	OFFICE Unit 3C	120.2 sq m	1294 sq ft
	OFFICE Unit 3D	101.0 sq m	1087 sq ft

TOTAL AREA: 343.5 sq m 3698 sq ft

The following areas have been EXCLUDED from the OFFICE Area:

Unit 3B Exit	1.2 sq m	13 sq ft
Unit 3B Toilets	4.0 sq m	43 sq ft
Unit 3C Exit	2.2 sq m	24 sq ft
Unit 3C Toilets	3.2 sq m	34 sq ft
Unit 3D Ducts	0.4 sq m	5 sq ft
Unit 3D Toilets	3.5 sq m	38 sq ft
Stairs/ Circulation	56.7 sq m	610 sq ft

BRAMLEY ROAD



murphy London
 9 Devonshire Square
 London
 EC2M 4YF
Asset Services Phone: 020 3170 7026

www.murphyassetservices.co.uk

Project : The Phoenix Brewery
 13 Bramley Road, LONDON, W10

Description : Third Floor
 Area Plan




Date : December 2012 **Issue :** A

Drawing Number : **MSL6365-AP3**

Scaled for presentation purposes

Condition of Site:	Note/Notes	Revisions	
Occupied Vacant Heavy Fit-Out Shell & Core Under Construction Cat A Fit-Out	This drawing complies with the 6th edition of the RICS code and indicates the extent of the areas quoted, produced to an accuracy commensurate with standard presentation scales. It is held in a scaled digital CAD format.	No.	Date
		A	13/12/2012
		Description	
		First Drawing	

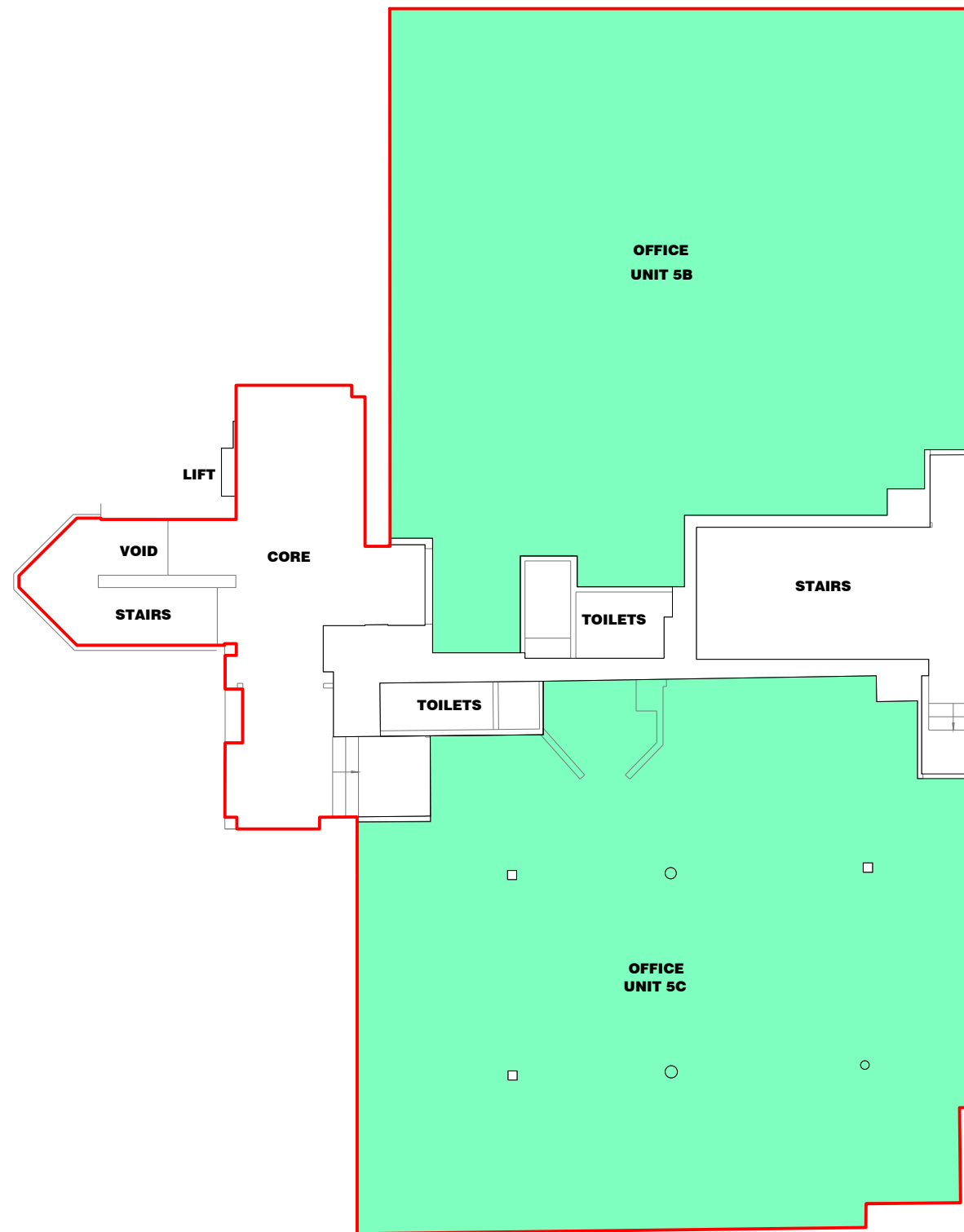
Net Internal Area Plan

	GIA	308.5 sq m	3321 sq ft
	OFFICE 5B	119.1 sq m	1282 sq ft
	OFFICE 5C	119.3 sq m	1284 sq ft
TOTAL AREA:		238.4 sq m	2566 sq ft

The following areas have been EXCLUDED from the OFFICE Area:

Unit 5B Toilets	4.6 sq m	sq ft
Unit 5C Toilets	3.3 sq m	36 sq ft
Stairs	51.1 sq m	550 sq ft

BRAMLEY ROAD



murphy London
 9 Devonshire Square
 London
 EC2M 4YF
Asset Services Phone: 020 3170 7026

www.murphyassetservices.co.uk

Project : Pheonix Brewery
 13 Bramley Rd London W10

Description : Fifth Floor
 Area Plan

Date : December 2012 **Issue :** A

Drawing Number : **MSL6365-AP5**

Scaled for presentation purposes

Condition of Site:	Note/Notes	Revisions															
Occupied Vacant Heavy Fit-Out Shell & Core Under Construction Cat A Fit-Out	This drawing complies with the 6th edition of the RICS code and indicates the extent of the areas quoted, produced to an accuracy commensurate with standard presentation scales. It is held in a scaled digital CAD format.	<table border="1" style="width: 100%;"> <thead> <tr> <th>No</th> <th>Date</th> <th>Description</th> </tr> </thead> <tbody> <tr> <td>A</td> <td>13/12/2012</td> <td>First Drawing</td> </tr> <tr> <td> </td> <td> </td> <td> </td> </tr> <tr> <td> </td> <td> </td> <td> </td> </tr> <tr> <td> </td> <td> </td> <td> </td> </tr> </tbody> </table>	No	Date	Description	A	13/12/2012	First Drawing									
No	Date	Description															
A	13/12/2012	First Drawing															